

# CENTRL

## Privacy360

Privacy Program Management  
Software - ePrivacy, GDPR &  
CCPA Compliance Platform

**CENTRL Privacy360** offers a comprehensive, intuitive and scalable platform to comply with multiple privacy regulations in one application. It includes end-to-end workflows to identify, measure and mitigate the privacy data risks across the enterprise. Specific regulation related rules can be easily configured to meet the business needs.

Data privacy is one of the most important issues facing corporations and the regulatory landscape on privacy is shifting on a daily basis. With the implementation of the General Data Protection Regulation (GDPR) in the European Union, and the recent introduction of the California Consumer Privacy Act (CCPA) comes a wave of possibility that similar regulations will quickly spread throughout the globe. Companies will have to implement scalable, real time processes to comply with the regulations. Not doing so will result in financial and credibility losses.

## Key Features

### Data Inventory & Data Mapping



- ✓ Map of all processing activities including the personal data categories, data elements, purpose of data collection, systems and locations where personal data resides
- ✓ Dual approach to automation: eDiscovery tools and survey harvesting to populate and maintain your data inventory
- ✓ Visualize the flow of data across your systems and to third parties with whom personal data is shared and sold

### Individual Rights Management



- ✓ Customizable request intake form that can be branded and tailored to client requirements
- ✓ Communicate within a secure portal with configurable access limits and data retention
- ✓ Simplify execution with communication templates, task management, assignment rules, and automatic reminders
- ✓ Automate disclosures and task creation for internal users and third parties with data inventory lookups
- ✓ Connect to external systems and APIs to fulfill requests and verify subject identity

### Assessment Automation



- ✓ Conduct assessments on internal processes, service providers and third parties to determine security and privacy gaps
- ✓ Create action plans to remediate issues and ensure that all necessary controls are implemented internally and at partners
- ✓ Save time by populating previous answers and tracking what has changed
- ✓ Collaborate with internal users and third parties to create, evaluate, and respond to assessments.

### Reporting & Analytics

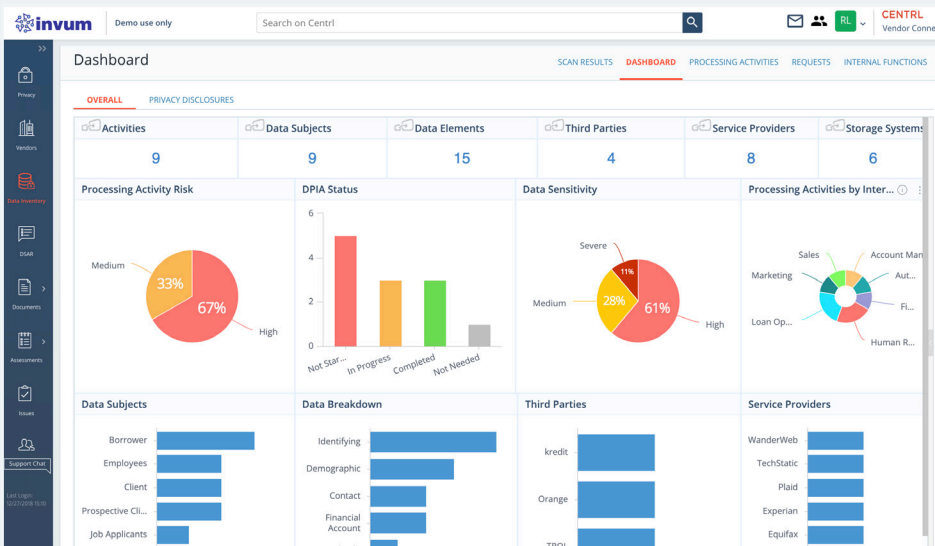
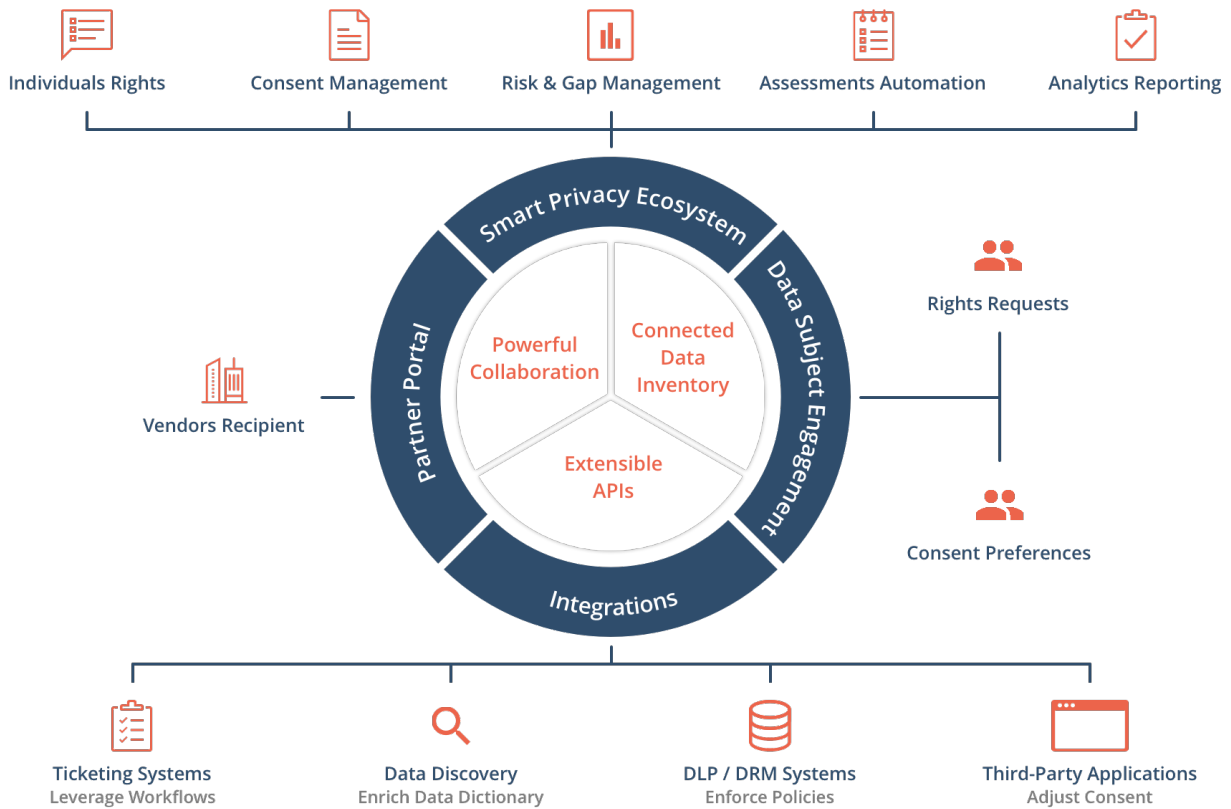


- ✓ Comprehensive business intelligence suite to manage and monitor your data inventory and subject access requests
- ✓ 360-degree view of processing activity by data subject, data categories, systems, third parties, and other attributes
- ✓ Operational dashboard to track day-to-day activity like consumer request backlog, risk activities, and statuses of assessments
- ✓ Executive-level dashboard to manage CCPA compliance across the organization

### Enterprise Ready



- ✓ Configure processing activities, subject access requests, and data maps with custom attributes to meet your specific business needs
- ✓ Secure with advanced role-based access, single sign-on, and comprehensive data encryption
- ✓ Choose where to host data to meet residency requirements



For more information on Privacy360 visit [oncentrl.com/Privacy360](https://oncentrl.com/Privacy360)

## Why CENTRL?

**Integrated Privacy Platform**

**Highly Intuitive & Flexible System**

**Deep Automation Across All Modules**

**Extract & Normalize Unstructured Data**

**Dynamic & Configurable Dashboards**

**Rapid Implementation & Easy Integration With Open APIs**

**Enterprise Grade Security, Controls & Scalability**